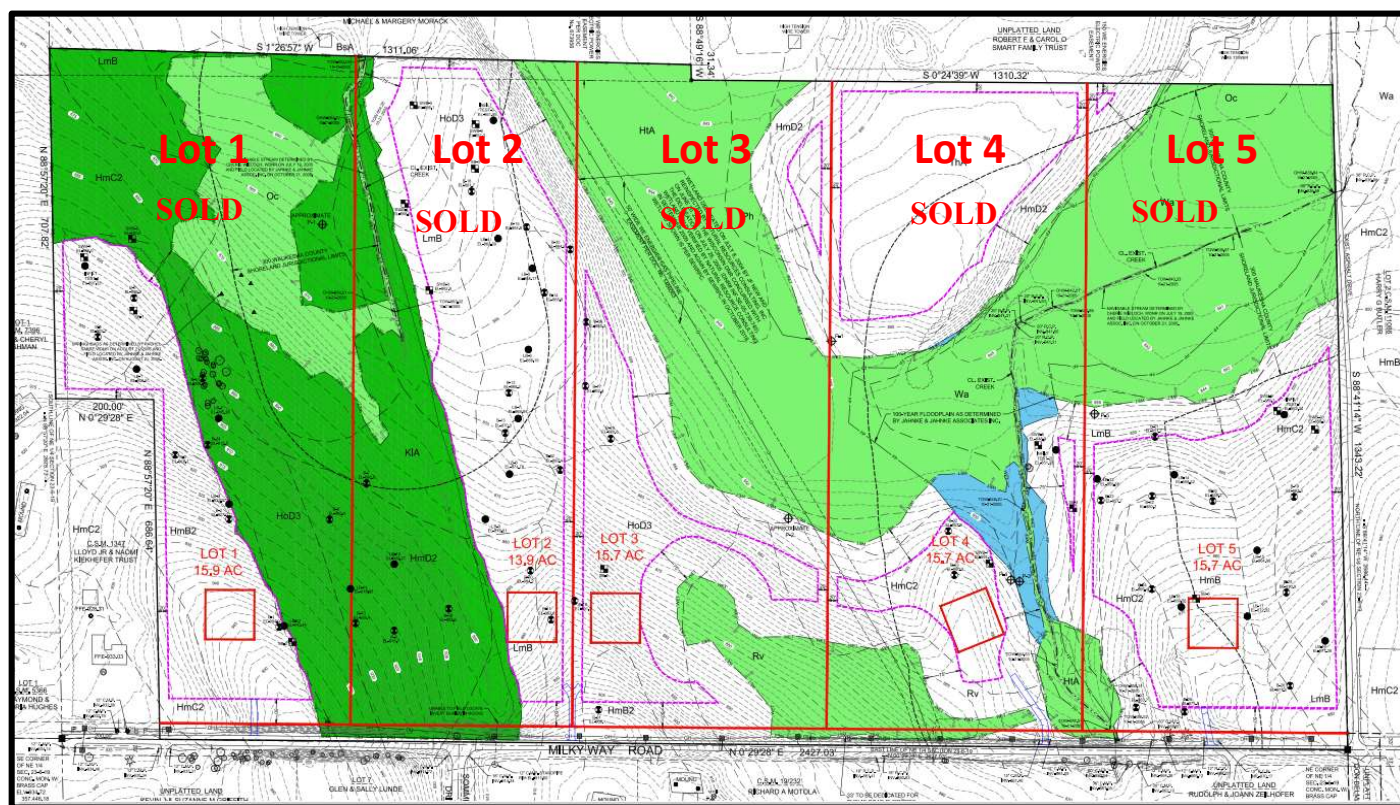


Build your dream home and outbuilding on these fantastic estate-sized properties on rolling terrain surrounded by beautiful woods and wetlands. Take advantage of the low tax rate in the Village of Waukesha. No Deed Restrictions!

Please contact our office for details.

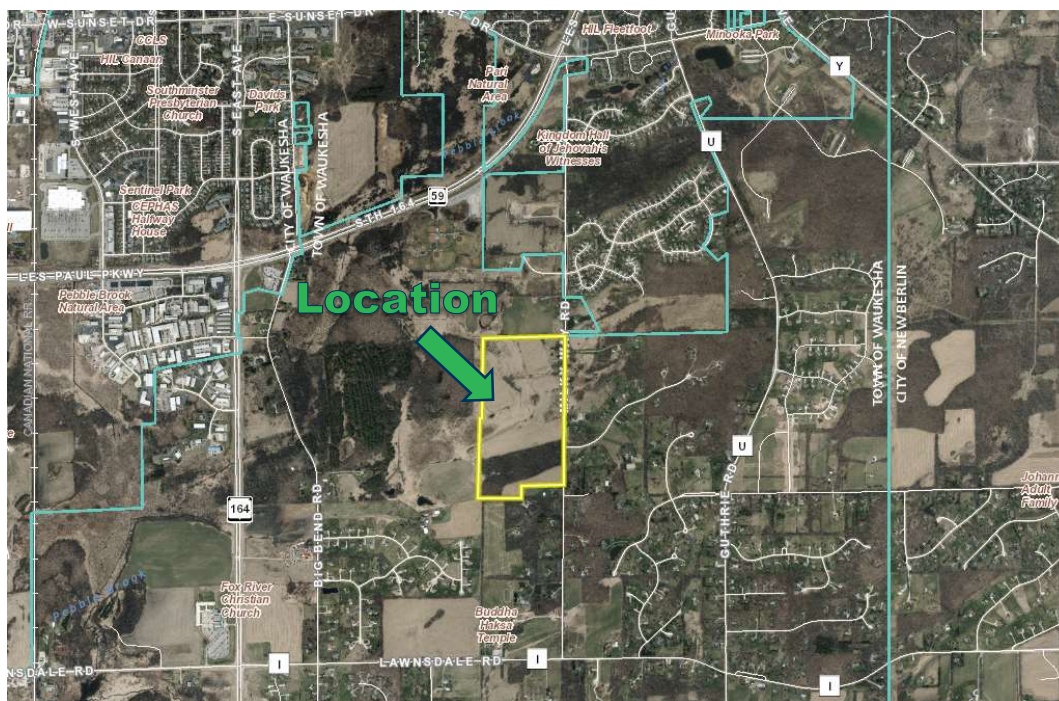


FOR MORE INFORMATION ABOUT THESE HOMESITES,
VISIT SIEPMANNREALTY.COM

Contact our office for further details.

LOT	PRICE	LOT SIZE	STATUS
1	\$265,400	15.9 Acres	Sold
2	\$279,500	13.9 Acres	Sold
3	\$266,900	15.7 Acres	Sold
4	\$262,500	15.7 Acres	Sold
5	\$274,900	15.7 Acres	Sold

No further division of these lots will be permitted.



FOR MORE INFORMATION ABOUT THESE HOMESITES,
VISIT SIEPMANNREALTY.COM



**EXCEPTIONAL
PROPERTIES.
NATURAL
SURROUNDINGS.**

**ARTFUL ENTRIES. PRAIRIE FLOWERS.
WELL-CARED FOR CONSERVATION SPACES.**

Embracing the natural landscape makes for a beautiful place to build a home. Surround your new home with all the offerings of Lake Country and Southeast Wisconsin.

As you look for a lot for your new home, it is important to explore all your options. More than the school district or proximity to amenities, we encourage you to evaluate what makes the neighborhood you choose truly unique. As the developer behind the most innovative properties and iconic neighborhoods in the area, we're proud to build places where neighbors become friends and friends become family. We know that no two communities are the same, yet the principles and commitment to quality should remain unchanged. Four concepts guide our land development process, and should guide your homesite selection as well:

- 1) Community, not subdivision approach that feels like home
- 2) Conservation development that cares for and protects our natural resources
- 3) Architectural foresight that embraces the best in design and ensures property value
- 4) Brokerage expertise to maximize the outcome for your property

THE SIEPMANN REALTY DIFFERENCE



"Siepmann has created greener neighborhoods where residents can enjoy trails, woodlands, meadows, ponds, and more. These park-like settings mature beautifully and create great places to live for many future generations to come."

*- Randall Arendt,
Conservation Planner*

BUILDING COMMUNITIES

Crackling from the fire pit. Laughter from the pool. Wind whispering through the trees. Siepmann communities sound just like home. Each community has been designed to draw out the best in life....no matter what that means to you.

EMBRACING CONSERVATION DEVELOPMENT

Rolling hills. Tree lined lots. Artistic design. We utilize a conservation approach that embraces the natural features of the land - terrain, water, historic farms, and more. You don't need to own 20 acres to feel like you live in the country...less to maintain, more to enjoy.

GUIDING ARCHITECTURAL VALUE

Resale value. Longevity. Timeless design. That's why we believe in architectural foresight. The guidelines set for Siepmann communities ensure your home's value and the appreciation of surrounding home designs, grow for years to come.

PROVIDING LAND BROKERAGE EXPERTISE

Do you have a property you would like to develop? Would you like to sell your property? We bring experience beyond the typical real estate broker - a specialization in land, consultation, sales, and marketing.

OUR RECENT DEVELOPMENTS

For more information on current homesite availability, pricing, and architectural foresight guidelines, please visit our website. Current developments include:

- Windrush
- Brightwater
- Summerhill West
- Trestle Creek
- Sivyver Avenue
- Sandhill (Coming Soon)
- Dry Creek (Coming Soon)
- Arrowood (Coming Soon)
- Monarch (Coming Soon)

Did you know that you can enjoy all of the community amenities and benefits throughout the construction of your new home?

**CONTACT US TO FIND A NEW HOMESITE
TODAY AND START RELAXING TOMORROW.**

