

Part of Lot 1 and all of Lot 2 of CSM No. 11118 and additional lands all being a part of the Northeast 1/4, Southeast 1/4, Southwest 1/4 and Northwest 1/4 of the Southwest 1/4 and the Southeast 1/4 of the Northwest 1/4 of Section 6, Township 7 North, Range 18 East, in the City of Delafield, Waukesha County, Wisconsin.

VICINITY SKETCH
SCALE: 1" = 200'
SECTION 6.7-18

PEG JOB#757.DOA-WI

HAWTHORN FARM

Part of Lot 1 and all of Lot 2 of CSM No. 1118 and additional lands all being a part of the Northeast 1/4, Southeast 1/4, Southwest 1/4 and Northwest 1/4 of the Southwest 1/4 and the Southeast 1/4 of the Northwest 1/4 of Section 6, Township 7 North, Range 18 East, in the City of Delafield, Waukesha County, Wisconsin.

REFERENCE BEARING: THE SOUTHWEST QUARTER (SW 1/4) OF SECTION 4, TOWN 7 NORTH, RANGE 18 EAST WAS USED AS THE REFERENCE BEARING AND HAS A BEARING OF S 87°02'27" W BASED ON THE WISCONSIN STATE PLANE COORDINATE SYSTEM, SOUTH ZONE (NAD 83).

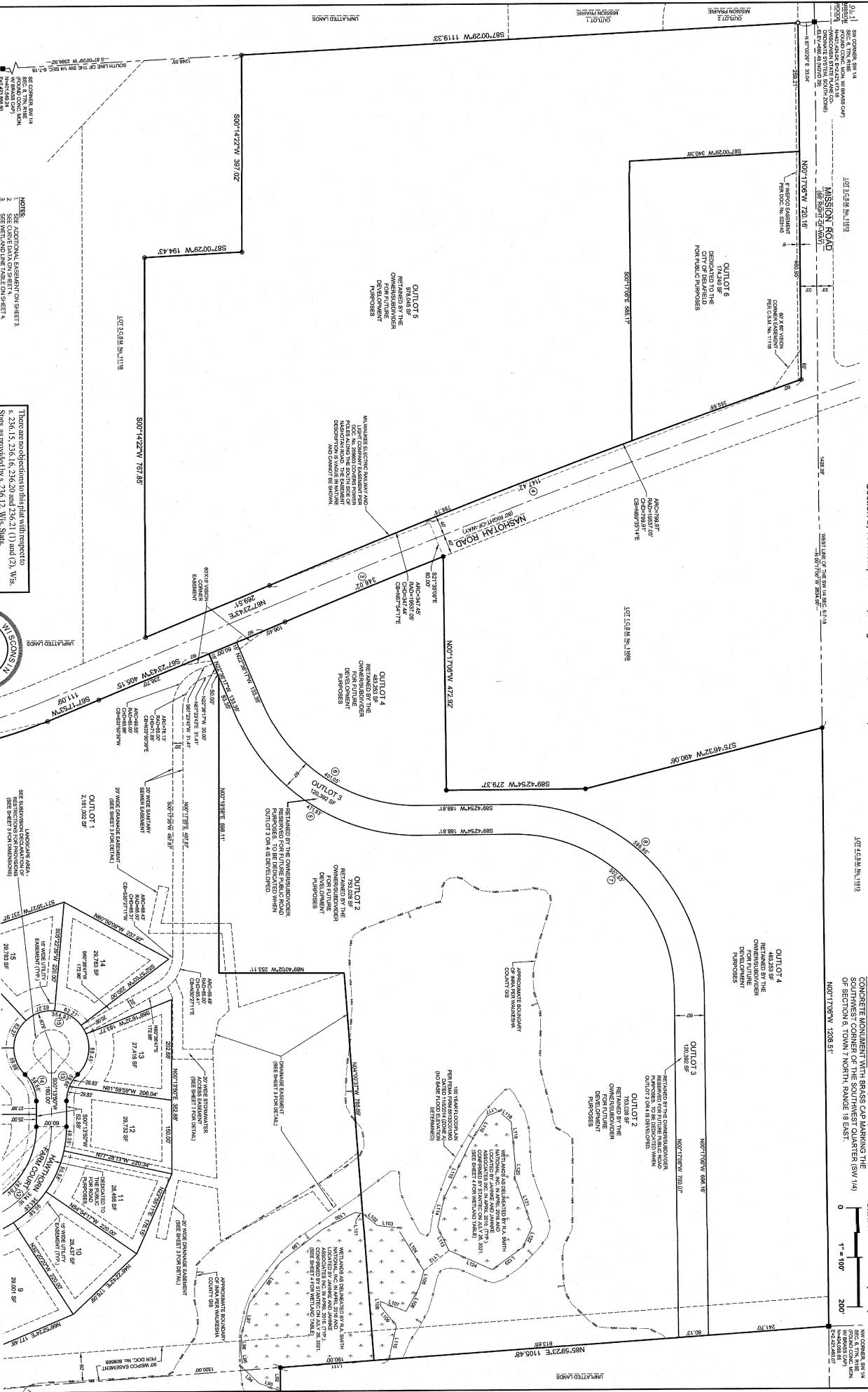
REFERENCE BEARING: 880.46 (NAD 83) THE TOP OF A CONCRETE MONUMENT WITH BRASS CAP MARKING THE SOUTHWEST CORNER OF THE SECTION 4, TOWN 7 NORTH, RANGE 18 EAST OF SECTION 6, TOWN 7 NORTH, RANGE 18 EAST.



GRAPHICAL SCALE (FEET)



NOT TO SCALE
FOR INFORMATION
ONLY



- NOTES:
1. SEE ADDITIONAL EASEMENT ON SHEET 3.
 2. SEE CURVE DATA ON SHEET 3 AND SHEET 4.
 3. SEE EASEMENT LINE AND CURVE TABLES ON SHEET 4.
 4. SEE ADDITIONAL NOTES ON SHEET 3.

This instrument drafted by John P. Konojacki, PLS-Registration No. S-2461
PINNACLE ENGINEERING GROUP

There are no objections to this plan with respect to s. 246.13, 246.16, 246.20 and 246.21 (1) and (2), Wis. Stats. as provided by s. 246.12, Wis. Stats.

Certified
December 13, 2021

John P. Konojacki
Department of Administration



DATE: SEPTEMBER 4, 2021
REVISED: NOVEMBER 4, 2021
REVISED: DECEMBER 6, 2021

LEGEND:

- 1. Dashed Line = Dotted Line
- 2. Dotted Line = Dotted Line
- 3. Dotted Line = Dotted Line
- 4. Dotted Line = Dotted Line
- 5. Dotted Line = Dotted Line
- 6. Dotted Line = Dotted Line
- 7. Dotted Line = Dotted Line
- 8. Dotted Line = Dotted Line
- 9. Dotted Line = Dotted Line
- 10. Dotted Line = Dotted Line
- 11. Dotted Line = Dotted Line
- 12. Dotted Line = Dotted Line
- 13. Dotted Line = Dotted Line
- 14. Dotted Line = Dotted Line
- 15. Dotted Line = Dotted Line
- 16. Dotted Line = Dotted Line
- 17. Dotted Line = Dotted Line
- 18. Dotted Line = Dotted Line
- 19. Dotted Line = Dotted Line
- 20. Dotted Line = Dotted Line
- 21. Dotted Line = Dotted Line
- 22. Dotted Line = Dotted Line
- 23. Dotted Line = Dotted Line
- 24. Dotted Line = Dotted Line
- 25. Dotted Line = Dotted Line
- 26. Dotted Line = Dotted Line
- 27. Dotted Line = Dotted Line
- 28. Dotted Line = Dotted Line
- 29. Dotted Line = Dotted Line
- 30. Dotted Line = Dotted Line
- 31. Dotted Line = Dotted Line
- 32. Dotted Line = Dotted Line
- 33. Dotted Line = Dotted Line
- 34. Dotted Line = Dotted Line
- 35. Dotted Line = Dotted Line
- 36. Dotted Line = Dotted Line
- 37. Dotted Line = Dotted Line
- 38. Dotted Line = Dotted Line
- 39. Dotted Line = Dotted Line
- 40. Dotted Line = Dotted Line
- 41. Dotted Line = Dotted Line
- 42. Dotted Line = Dotted Line
- 43. Dotted Line = Dotted Line
- 44. Dotted Line = Dotted Line
- 45. Dotted Line = Dotted Line
- 46. Dotted Line = Dotted Line
- 47. Dotted Line = Dotted Line
- 48. Dotted Line = Dotted Line
- 49. Dotted Line = Dotted Line
- 50. Dotted Line = Dotted Line
- 51. Dotted Line = Dotted Line
- 52. Dotted Line = Dotted Line
- 53. Dotted Line = Dotted Line
- 54. Dotted Line = Dotted Line
- 55. Dotted Line = Dotted Line
- 56. Dotted Line = Dotted Line
- 57. Dotted Line = Dotted Line
- 58. Dotted Line = Dotted Line
- 59. Dotted Line = Dotted Line
- 60. Dotted Line = Dotted Line
- 61. Dotted Line = Dotted Line
- 62. Dotted Line = Dotted Line
- 63. Dotted Line = Dotted Line
- 64. Dotted Line = Dotted Line
- 65. Dotted Line = Dotted Line
- 66. Dotted Line = Dotted Line
- 67. Dotted Line = Dotted Line
- 68. Dotted Line = Dotted Line
- 69. Dotted Line = Dotted Line
- 70. Dotted Line = Dotted Line
- 71. Dotted Line = Dotted Line
- 72. Dotted Line = Dotted Line
- 73. Dotted Line = Dotted Line
- 74. Dotted Line = Dotted Line
- 75. Dotted Line = Dotted Line
- 76. Dotted Line = Dotted Line
- 77. Dotted Line = Dotted Line
- 78. Dotted Line = Dotted Line
- 79. Dotted Line = Dotted Line
- 80. Dotted Line = Dotted Line
- 81. Dotted Line = Dotted Line
- 82. Dotted Line = Dotted Line
- 83. Dotted Line = Dotted Line
- 84. Dotted Line = Dotted Line
- 85. Dotted Line = Dotted Line
- 86. Dotted Line = Dotted Line
- 87. Dotted Line = Dotted Line
- 88. Dotted Line = Dotted Line
- 89. Dotted Line = Dotted Line
- 90. Dotted Line = Dotted Line
- 91. Dotted Line = Dotted Line
- 92. Dotted Line = Dotted Line
- 93. Dotted Line = Dotted Line
- 94. Dotted Line = Dotted Line
- 95. Dotted Line = Dotted Line
- 96. Dotted Line = Dotted Line
- 97. Dotted Line = Dotted Line
- 98. Dotted Line = Dotted Line
- 99. Dotted Line = Dotted Line
- 100. Dotted Line = Dotted Line

PINNACLE ENGINEERING GROUP
20725 WATERLOO ROAD, SUITE 100
BROOKFIELD, WI 53005
OFFICE: (262) 791-8888
WWW.PINNACLE-ENG.COM

OWNER/PLANNED
HAWTHORN FARM
C/O BERMAN REALTY
W240 N221 Fawcett Road
Waukesha, WI 53188
(262) 550-7700

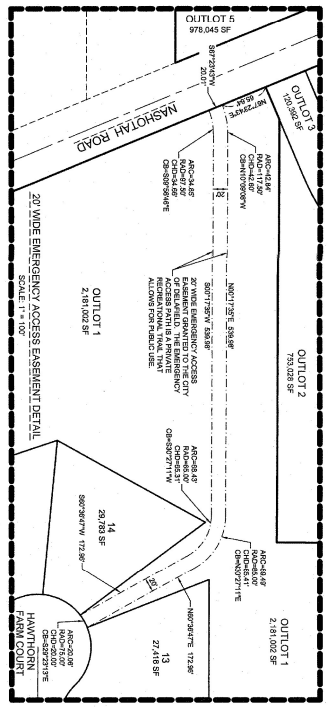
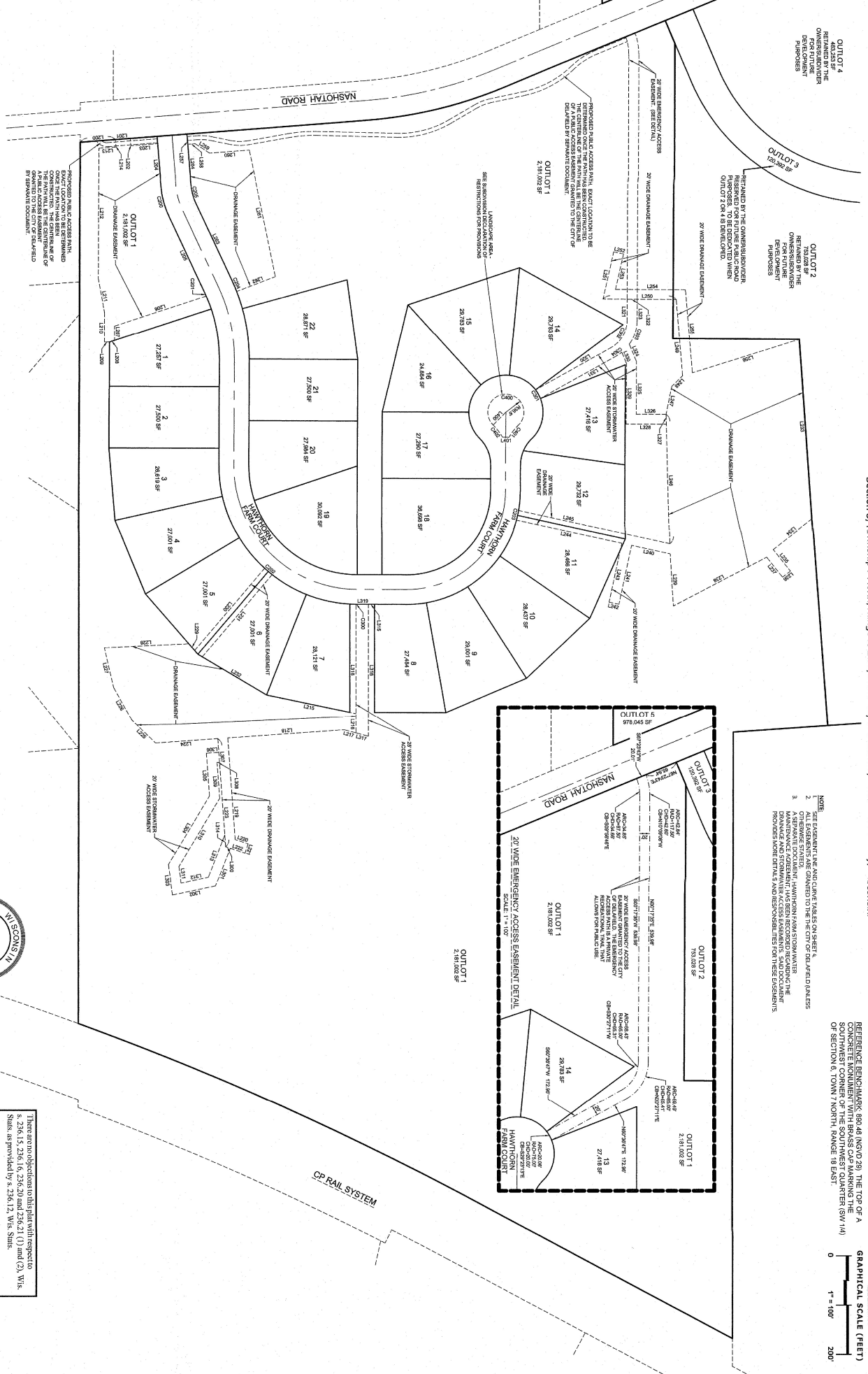
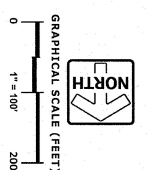
PREPARED BY: JOHN P. KONOJACKI
SHEET 2 OF 3

HAWTHORN FARM

Part of Lot 1 and all of Lot 2 of CSM No. 1118 and additional lands all being a part of the Northeast 1/4, Southeast 1/4, Southwest 1/4 and Northwest 1/4 of the Southwest 1/4 and the Southeast 1/4 of the Northwest 1/4 of Section 6, Township 7 North, Range 18 East, in the City of Delafield, Waukesha County, Wisconsin.

REFERENCE BEARS: THE SOUTHWEST CORNER OF THE SOUTHWEST QUARTER (SW 1/4) OF SECTION 6, TOWNSHIP 7 NORTH, RANGE 18 EAST WAS USED AS THE REFERENCE BEARING AND HAS A BEARING OF S 87°00'27" W BASED ON THE WISCONSIN STATE PLANE COORDINATE SYSTEM (NAD 83) (NAD 27).

REFERENCE BEARING: 88°46' (NAD 29) THE TOP OF A CONCRETE MONUMENT WITH BRASS CAP MARKING THE SOUTHWEST CORNER OF THE SOUTHWEST QUARTER (SW 1/4) OF SECTION 5, TOWNSHIP 7 NORTH, RANGE 18 EAST.



1. SEE EASEMENT LINE AND CURVE TABLES ON SHEET 4.
2. OUTLET 1 AND 2 ARE LOCATED IN THE CITY OF DELAFIELD.
3. A SEPARATE DOCUMENT, HAWTHORN FARM STORMWATER DRAINAGE AND STORMWATER ACCESS EASEMENTS, SAID DOCUMENT PROVIDES MORE DETAIL AND RESPONSIBILITIES FOR THESE EASEMENTS.

This instrument drafted by John P. Konopacki, P.E. Registration No. 5-2461
PINNACLE ENGINEERING GROUP

Prepared by:
PINNACLE ENGINEERING GROUP
 2075 VANDERBILT ROAD, SUITE 100
 OFFICE: (262) 754-8888
 WWW.PINNACLE-ENG.COM

Owner/Subscriber:
HAWTHORN DEVELOPMENT, INC.
 1000 N. 12TH STREET, SUITE 100
 WAUKESHA, WI 53188
 (262) 550-0700



DATE: SEPTEMBER 14, 2021
 REVISION: 1
 REVISED: DECEMBER 6, 2021

There are no objections to this plan with respect to
 s. 236.15, 236.16, 236.20 and 236.21 (1) and (2), Wis.
 Stats. as provided by s. 236.12, Wis. Stats.
 Certified December 13, 2021
John P. Konopacki
 Professional Engineer
 Department of Administration

HAWTHORN FARM

Part of Lot 1 and all of Lot 2 of CSM No. 11118 and additional lands all being a part of the Northeast 1/4, Southeast 1/4, Southwest 1/4 and Northwest 1/4 of the Southwest 1/4 and the Southeast 1/4 of the Northwest 1/4 of Section 6, Township 7 North, Range 18 East, in the City of Deliafield, Waukesha County, Wisconsin.

CURVE NO.	ARC	RADIUS	DELTA	CHORD BEARING	CHORD LENGTH	TANGENT IN	TANGENT OUT
C001	83.95	180.00	207.1207	N4+32.22W	63.81	N62+42.42W	N62+42.42W
C002	7.82	300.00	1.2401	N4+32.22W	7.42	N62+42.42W	N62+42.42W
C003	20.00	280.00	4.0538	N4+32.22W	20.00	N62+42.42W	N62+42.42W
C004	20.01	280.00	4.0539	N4+32.22W	20.00	N62+42.42W	N62+42.42W
C005	4.65	100.00	207.1207	S11+33.22E	42.41	S67+10.13E	S67+10.13E

DRAINAGE EASEMENT CURVE TABLE

DRAINAGE EASEMENT LINE TABLE

LINE NO.	BEARING	DISTANCE	LINE NO.	BEARING	DISTANCE
L200	S89+31.10W	70.37	L233	N61+07.10W	384.00
L201	S89+31.10W	30.00	L234	N61+07.10W	100.18
L202	S89+31.10W	15.00	L235	N61+03.25W	55.62
L203	S89+31.10W	53.76	L236	N61+03.25W	20.00
L204	S89+31.10W	61.00	L237	S83+00.75E	51.00
L205	N64+42.00W	176.54	L238	N60+56.42E	211.75
L206	N64+42.00W	183.30	L239	S89+10.00E	106.64
L207	N60+13.90E	29.50	L240	S87+28.10E	79.06
L208	N61+14.10E	10.00	L241	N14+05.10E	123.17
L209	S89+31.10W	10.00	L242	S87+59.95E	20.00
L210	S89+31.10W	66.62	L243	S12+04.40W	123.33
L211	S10+00.75E	216.63	L244	S17+28.10E	216.63
L212	S89+31.10W	200.00	L245	N17+28.10E	300.72
L213	S89+31.10W	34.18	L246	N07+54.60E	286.70
L214	S59+14.16E	15.00	L247	S11+11.91W	51.30
L215	N78+10.10W	186.00	L248	S64+23.55W	70.87
L216	N60+15.00E	30.90	L249	S64+44.75E	156.62
L217	S81+39.25E	24.50	L250	S69+40.00E	164.00
L218	N61+39.25E	20.57	L251	S12+37.00E	86.20
L219	N60+00.00W	206.16	L252	N17+22.90E	20.00
L220	N14+00.00W	21.51	L253	N17+21.00E	71.37
L221	N18+29.05E	20.00	L254	N89+40.40W	138.47
L222	S11+00.75E	40.87	L255	N64+48.00W	166.78
L223	S14+00.75E	214.87	L256	S12+26.00W	20.76
L224	N60+59.30E	15.00	L257	N60+22.60E	34.18
L225	S44+23.00E	65.16	L258	S89+31.10W	15.00
L226	S69+50.00E	75.19	L259	N65+10.00W	34.90
L227	N61+14.10E	82.67	L260	S89+31.10W	82.00
L228	S67+20.00W	166.17	L261	N65+50.10W	50.21
L229	N60+27.00W	11.79	L262	N65+50.10W	51.79
L230	S61+17.42E	215.53	L263	S24+44.00E	175.64
L231	S61+17.42E	215.53	L264	S25+22.42E	78.28

